



The Ministry of Mines,
Industry and Energy

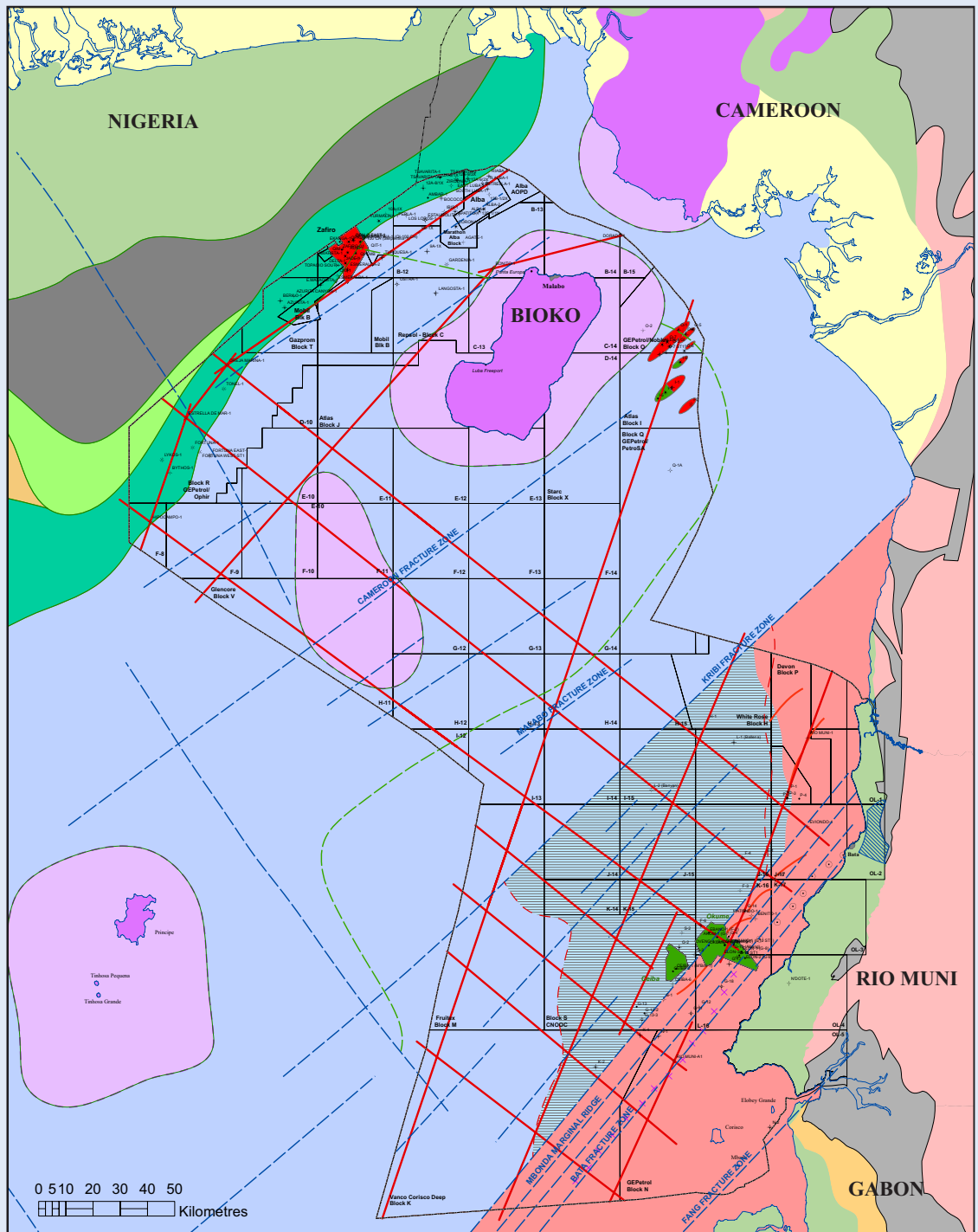
Interpretation of Long Offset Seismic Data Offshore Equatorial Guinea

RPS Energy

EQUATORIAL GUINEA

RPS Energy is pleased to announce the availability of this new report prepared on behalf of the Ministry of Mines, Industry and Energy of Equatorial Guinea.

This report documents a geological interpretation of the 2005 Long Offset reflection data and its implications for petroleum geology in the eastern Gulf of Guinea.



Interpretation of Long Offset Seismic Data Offshore Equatorial Guinea

The long offset dataset covers the whole of offshore Equatorial Guinea (except the area around Annobon) and with a record length of 14 seconds (TWT) the data provides a good image down to the reflection Moho of oceanic and proto-oceanic crust. Coupled with data from 32 public domain wells this report has also enabled the development of a consistent regional structural and stratigraphic framework for the eastern Gulf of Guinea.

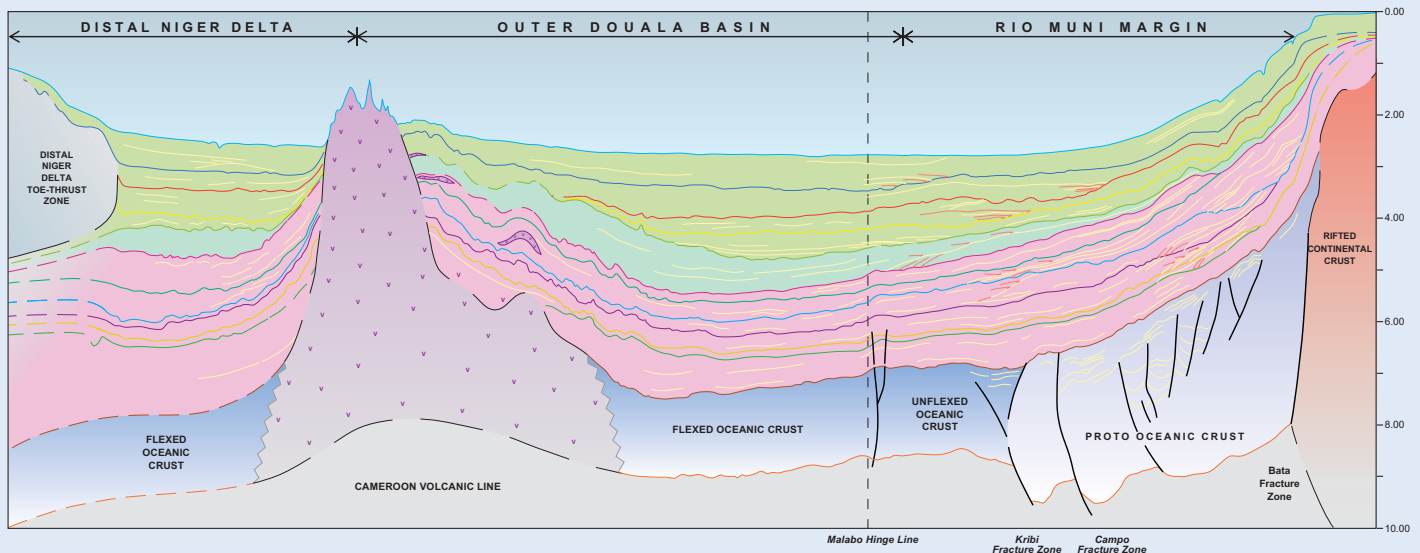
Deliverables include:

Interpreted seismic profiles for all 17 sections

Report documenting interpretation of structure and stratigraphy including:

- The nature and structure of oceanic, proto-oceanic and rifted continental crust along the 'oblique divergent' plate setting of Rio Muni.
- The deep crustal structure including oceanic fracture zones and tectonic affects associated with the marginal fracture ridge and the Cameroon Volcanic Line.
- Newly synthesised break-up history of the eastern Gulf of Guinea.
- Regional seismic stratigraphic assessment of drift section across the three basinal elements; Rio Muni, Douala Basin and the Distal Niger Delta.

Available to companies that have licensed the 2005 survey.



For further details please contact:

Simon Tubb

RPS Energy

309 Reading Road, Henley-on-Thames, Oxfordshire, RG9 1EL, United Kingdom

Tel: +44 (0)1491 415400 Fax: +44 (0)1491 415415 email: tubbs@rpsgroup.com

website: www.rpsgroup.com/energy