



The Ministry of Mines,
Industry and Energy

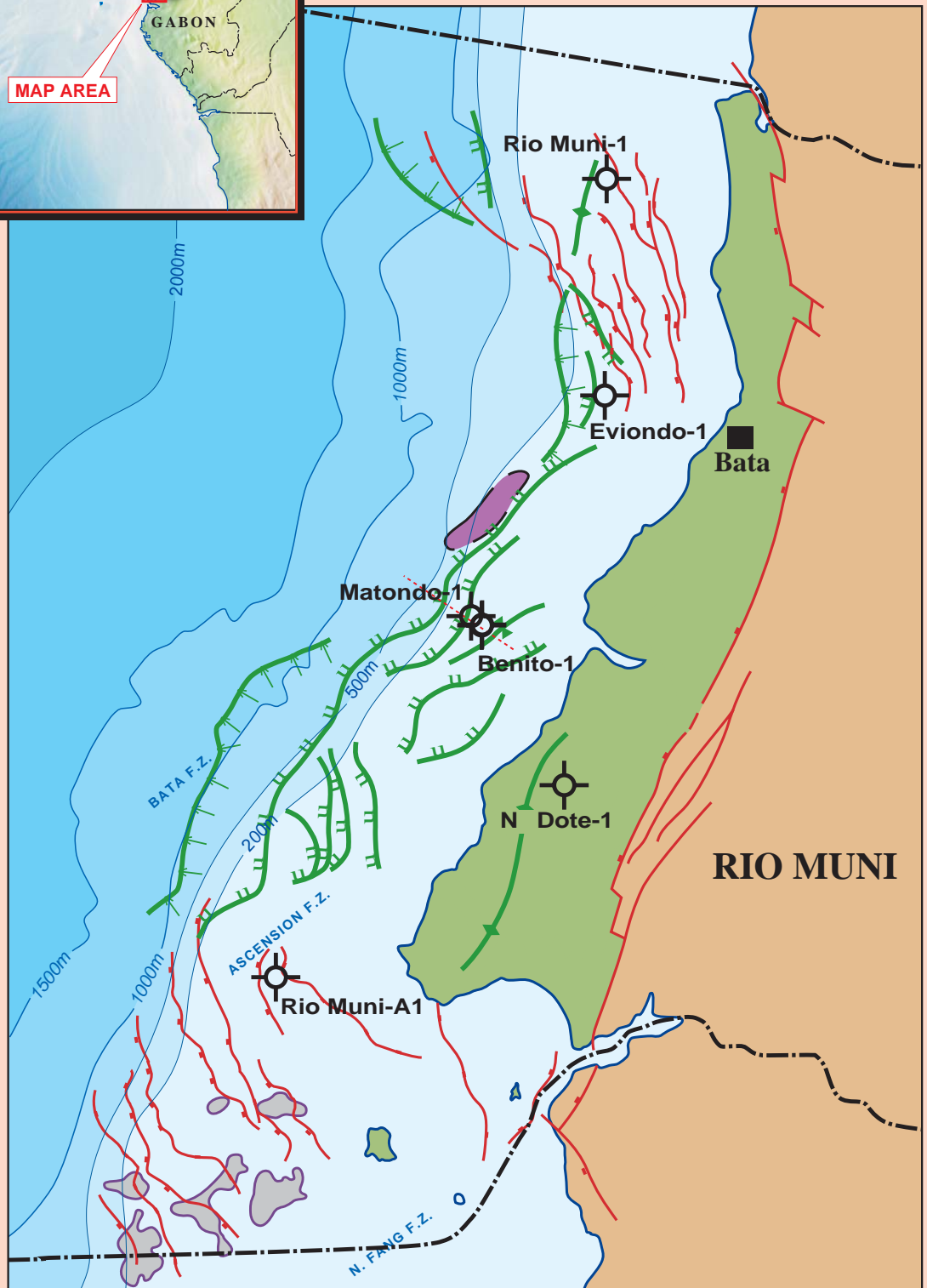
The Petroleum Potential of Offshore Rio Muni

RPS Energy

RIO MUNI BASIN, EQUATORIAL GUINEA



This 1999 fully integrated seismic mapping and prospectivity overview report was based on the full historical seismic and well database. The report identifies pre- and post-salt exploration targets and successfully forecast the Ceiba petroleum system.

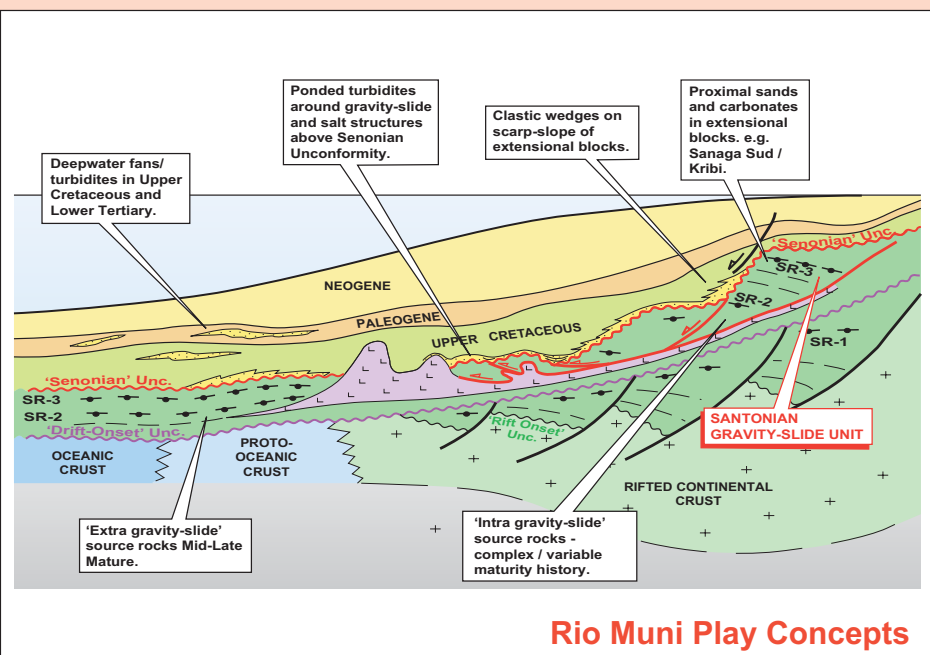
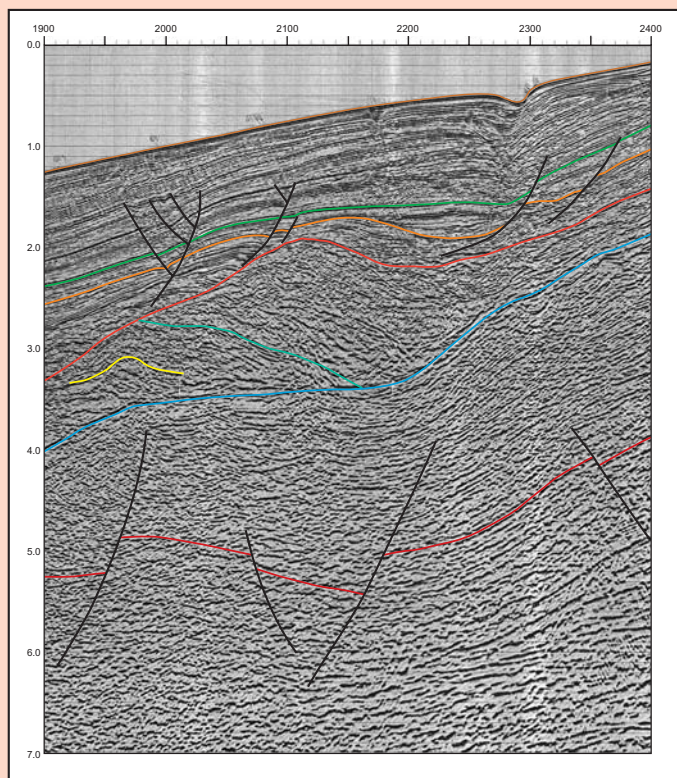


Containing sections on:

- ◆ Exploration History
- ◆ Well Post-Mortems
- ◆ Regional Geology
- ◆ Stratigraphic Analysis
- ◆ Seismic Interpretation
- ◆ Petroleum Geology and Potential
- ◆ Basin Modelling / Maturation Studies
- ◆ Play and Prospect Analysis

Illustrated with 60 text figures and 42 map enclosures including:

- ◆ Seismic Time and Depth Structure Maps at 1:100,000
- ◆ Prospect Time Structure Maps at 1:50,000 for a total of 8 horizons
- ◆ Prospect Summary Maps at 1:100,000



also Appendices containing:

- ◆ Basin Modelling Plots
- ◆ Well Summary Montages
- ◆ Seismic, Well and Report Data Lists

Price Schedule (US Dollars)

Single Company Purchase - \$20,000

Group escalations available

Available in Hardcopy and Digital (Adobe Acrobat) format

For further details please contact Simon Tubb at:

RPS Energy, 309 Reading Road, Henley-on-Thames, Oxfordshire. RG9 1EL, UK

Tel: +44 (0)1491 415400 email: tubbs@rpsgroup.com

Fax: +44 (0)1491 415415 website: www.rpsgroup.com/energy