



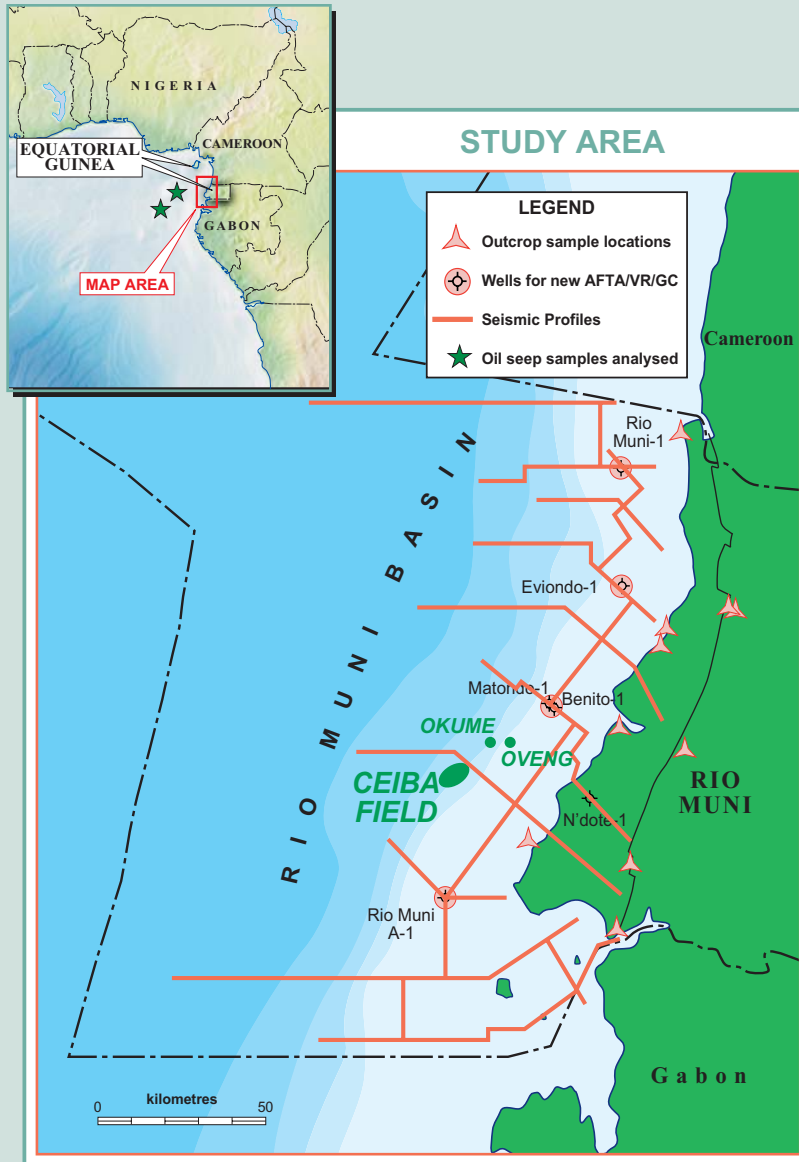
The Ministry of Mines,
Industry and Energy

Structural and Stratigraphic Development and Source Rock Maturation History

RPS Energy

RIO MUNI BASIN, EQUATORIAL GUINEA

A MAJOR STUDY IN ONE OF WEST AFRICA'S MOST EXCITING FRONTIER BASINS

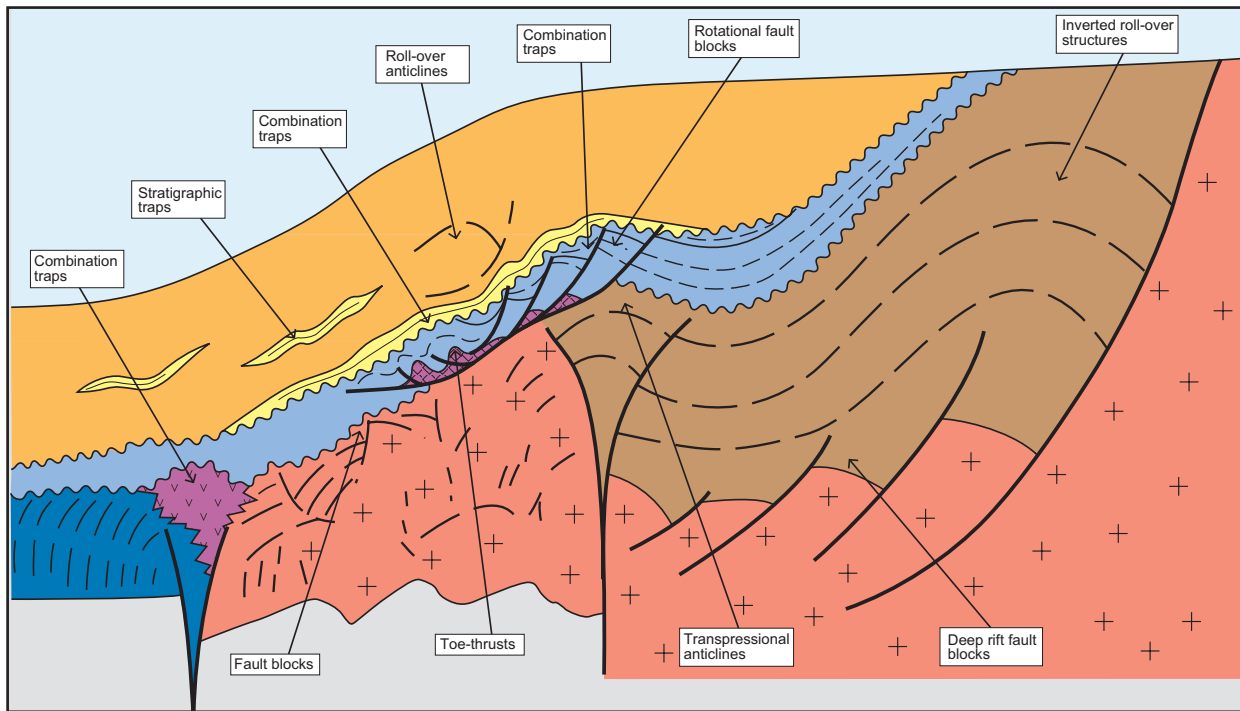


A comprehensive, multi-disciplinary report providing a modern dataset for assessment of the hydrocarbon system, and combined with the historical data, enable key issues controlling the prospectivity of the Rio Muni Basin to be addressed.

The study includes -

- ◆ Extensive analytical programme, including:-
 - New geochemical analysis of seep oils from Principe and Sao Tome, well cuttings and outcrop samples
 - New AFTA and Thermal History data from 44 samples from 5 wells and 10 outcrop locations
 - New high quality vitrinite reflectance data from 90 well and outcrop samples
- ◆ Full integration of historical geochemistry and maturity data
- ◆ Interpretation of historical seismic database. 11 composite seismic profile displays depicting basin structure
- ◆ New structural model for evolution of eastern Gulf of Guinea
- ◆ Basin modelling, maturity and hydrocarbon generation history reconstruction
- ◆ Recognition of petroleum systems, play concepts and petroleum potential

*Available from RPS Energy in conjunction with the
Ministry of Mines, Industry and Energy, Equatorial Guinea*



PLAY TYPES

SCOPE OF STUDY

- ◆ **Review of Regional Geology** of Eastern Gulf of Guinea Atlantic Margin
- ◆ **Tectono-stratigraphic** framework refined to help define key structural episodes and associated deepwater clastic sedimentation
- ◆ **Structural Evolution** based on historical seismic data with presentation of new structural models
- ◆ **Source Rock Evaluation** of identified pre and post-salt source-prone intervals
- ◆ **Thermal History Reconstruction and Maturity Development** using AFTA / VR analysis and basin modelling for source maturity and hydrocarbon generation history
- ◆ **Petroleum Potential and Play Analysis** to predict basin-wide distribution of play fairways
- ◆ **Comprehensive, multi-volume report** including all new data and results.

Price Schedule (US Dollars)

Single Company Purchase - **\$55,000**

Group escalations available

Available in Hardcopy, Digital (Adobe Acrobat) and ArcView (GIS) formats

For further details please contact Simon Tubb at:

RPS Energy, 309 Reading Road, Henley-on-Thames, Oxfordshire. RG9 1EL, UK

Tel: +44 (0)1491 415400 email: tubbs@rpsgroup.com

Fax: +44 (0)1491 415415 website: www.rpsgroup.com/energy

Biostratigraphical data were acquired from wells in a study by Lacustrine Basin Research, which is available as a separate report.